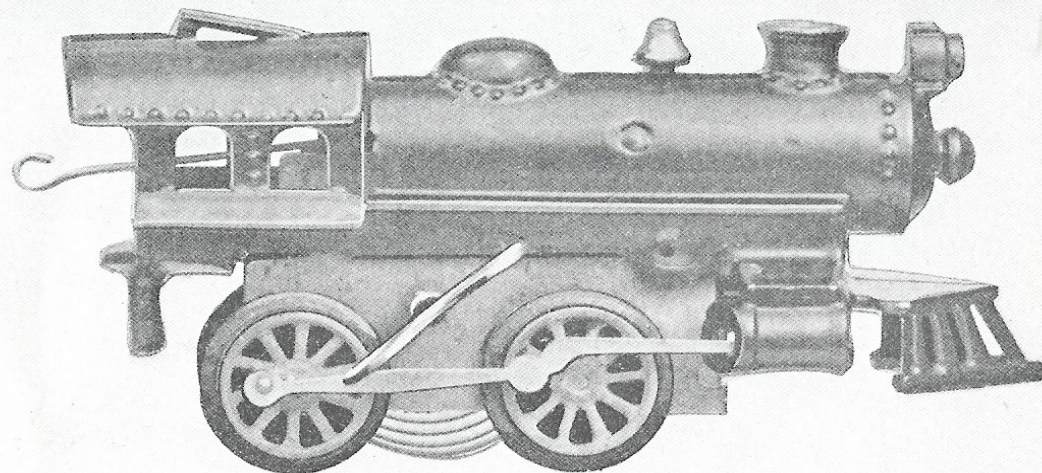


No. 1 Engine 6½ inches long.



No. 13 Engine 7 inches long with piston rods and brake.

"AMERICAN FLYER" Engines are made of heavy cast iron. They are equipped with steel pinion geared clockwork and high quality extra heavy motor spring.

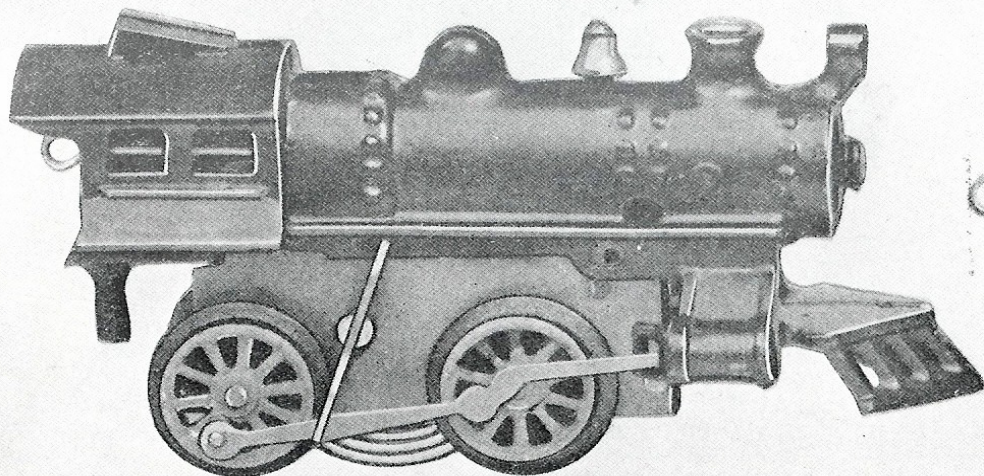
The friction disc winding clutch on the engine not only makes it wind very easy, but also prevents the spring from unhooking when the motor runs down—a very important feature.

The steel pinion gears add greatly to the wearing qualities. Innumerable tests have proven they wear many times longer than those made of brass, because steel is so much stronger than brass. These steel pinion gears cost more, because steel

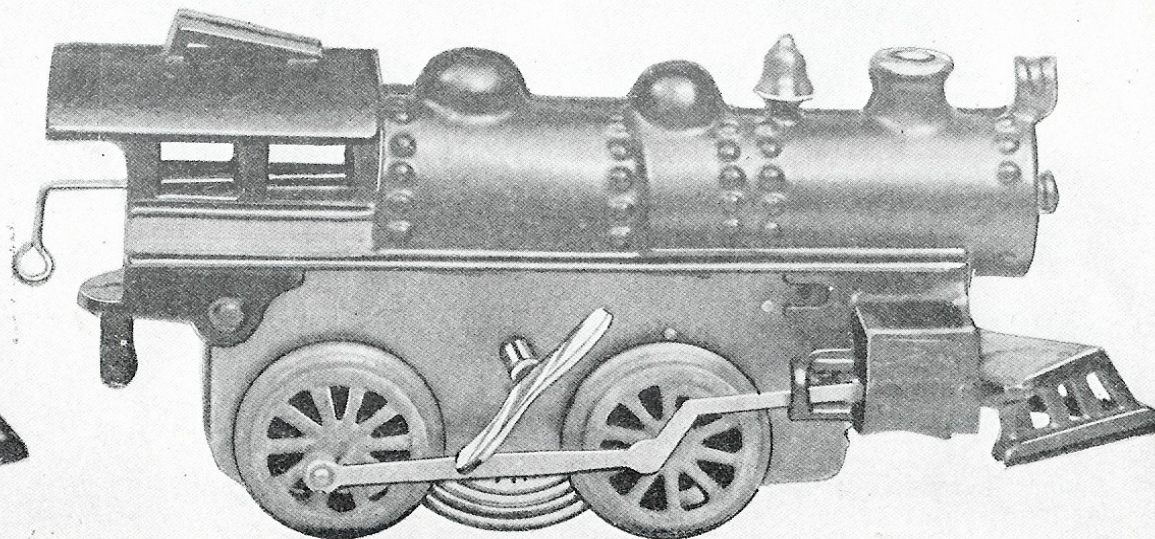
is so hard it takes longer to make them, and it requires the use of special machinery, which alone costs thousands of dollars.

The friction disc winding clutch and steel pinion gears are exclusive features found only in the **"AMERICAN FLYER"** clockwork. They make the engine wind easier, wear longer, and run farther. They insure you a mechanical toy that is as near perfect as it is possible to make.

"AMERICAN FLYER" ENGINES ARE GUARANTEED FREE FROM MECHANICAL DEFECTS FOR SIX MONTHS.



No. 2 Engine 6½ inches long with piston rods and brake.



No. 15 Engine 7¾ inches long, brake and automatic brake stop.